



GOBIERNO DE ESPAÑA  
MINISTERIO DE CIENCIA, INNOVACIÓN Y UNIVERSIDADES



Fundação Champalimaud

# INTERNATIONAL CONGRESS ON NEURODEGENERATIVE DISEASES

September 19–21, 2024  
Champalimaud Foundation  
Lisbon, Portugal

Image: Dancing Astrocytes

Accreditation requested for the International Congress on Neurodegenerative Diseases of the Fundación CIEN with the reference number 57/164553.9/24 to the Commission for the Continuing Training of Health Professions of the Community of Madrid.

Early detection of the pathological components leading to cognitive deterioration

08.30 - 09.00

**REGISTRATION**

09.00 - 11.30

**SCIENTIFIC SESSION I: NEUROPATHOLOGY**

We will start with a neuropathology session proposing that co-pathology is the norm in dementia, and most patients have several components: tau, amyloid, TDP-43, alpha-synuclein

**CHAIRPERSON:**

**ALBERTO RÁBANO**

*BTCIEN-Fundación CIEN, Madrid. Spain.*

**SANDRA TOMÉ**

*KU-Leuven, Belgium.*

**The impact of TDP-43 pathological synergies in Alzheimer's Disease**

**GABOR KOVACS**

*Laboratory Medicine & Pathobiology. University of Toronto. Canada.*

**Interpretation of mixed pathologies (On-Line)**

**DIEGO SEPÚLVEDA**

*UKE Hamburg. Germany.*

**New insights in mechanisms for resistant and resilience in familial Alzheimer's disease brains**

**ED LEIN**

*Allen Institute, Seattle. USA.*

**Single cell transcriptomics & disease progression in Alzheimer's Disease**

11.30 - 12.00



**COFFEE BREAK & POSTERS**

SCIENTIFIC PROGRAM

Early detection of the pathological components leading to cognitive deterioration

12.00 - 13.00

**SCIENTIFIC SESSION II: GENETIC VARIABILITY**

In the following session, we will address how genetic variability is associated with the risk of AD and some of the most frequent co-pathologies (alpha-synuclein, TDP43, vascular...) and how it can potentially be used for diagnostic and/or risk classification. We will also explore brain resilience from a genetic perspective.

**CHAIRPERSON:**

**AGUSTÍN RUIZ**

*Fundació ACE-CIBERNED, Barcelona. Spain.*

**ALFREDO RAMÍREZ**

*Cluster of Excellence for Aging Research. University of Cologne. Germany.*

**Inflammatory pathways operating at the intersection of ageing and Alzheimer's disease modulate the speed of cognitive decline**

**HENNE HOLSTEGE**

*Alzheimer Center Amsterdam. VUmc. Amsterdam UMC. Netherlands.*

**How genetics help to maintain a young and healthy brain: lessons from cognitively healthy centenarians**

13.00 - 15.00



**LUNCH & POSTERS**

Early detection of the pathological components leading to cognitive deterioration

15.00 - 16.30

**SCIENTIFIC SESSION III: NEUROIMAGING**

We will deepen into neuroimaging techniques for detecting different dementia-related brain alterations reflecting distinct pathologic components.

**CHAIRPERSON:**

**MICHEL GROTHE**

*Fundación CIEN, Madrid. Spain.*

**DAVID WOLK**

*Penn Alzheimer's Disease Research Center. University of Pennsylvania. USA.*

**Neuroimaging Clues to LATE and Other Common AD Co-Pathologies**

**JESÚS SILVA**

*Fundación CIEN, Madrid. Spain.*

**Hypometabolic signatures of LATE-NC and Lewy Body pathology. Unveiling the heterogeneity of amnestic syndromes**

**LAURA JONKMAN**

*Amsterdam Neuroscience - Brain Imaging (VUmc). Amsterdam UMC. Netherlands.*

**From MRI to microscope: translating neuropathology**

16.30 - 17.00



**COFFEE BREAK & POSTERS**

SCIENTIFIC PROGRAM

Early detection of the pathological components leading to cognitive deterioration

17.00 - 18.30

**SCIENTIFIC SESSION IV: BIOMARKERS**

Discussing the detection of neuropathological components in the periphery using biochemical markers

**CHAIRPERSON:**

**PASCUAL SÁNCHEZ JUAN**

*Fundación CIEN, Madrid, Spain.*

**GEMMA SALVADÓ**

*Clinical Memory Research. Lund University. Sweden.*

**Current status of fluid biomarkers in research, clinical setting and trials**

**ANJA SCHNEIDER**

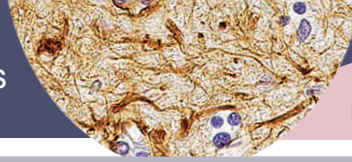
*Translational Dementia Research. German Center for Neurodegenerative Diseases-DZNE. University of Bonn. Germany.*

**Extracellular vesicle biomarkers in neurodegenerative diseases**

**MARC SUÁREZ-CALVET**

*Barcelona Beta Brain Research Center. Hospital del Mar, Barcelona. Spain.*

**Blood-based Biomarkers in Cognitively Unimpaired Individuals at-risk of Alzheimer's disease**



Personalized Interventions. Secondary prevention

09.30 - 11.00

**SCIENTIFIC SESSION V: PHARMACOLOGICAL INTERVENTION**

We will discuss pharmacological interventions, specifically tackling some of the main pathological components of dementia

**CHAIRPERSONS:**

**ALBERTO LLEÓ**

*Unidad de Memoria. Hospital de Sant Pau, Barcelona. Spain.*

**LUISA ALVES**

*Universidade NOVA de Lisboa. Portugal.*

**MALÚ GAMEZ TANSEY**

*Center for Translational research in Neurodegenerative disease.  
University of Florida. USA.*

**Targeting immune dysfunction and chronic inflammation**

**TIAGO OUTEIRO**

*Goettingen University. Germany.*

**From biology to classification: understanding Parkinson's disease**

**CATHERINE MUMMERY**

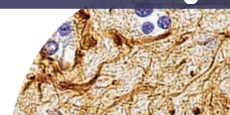
*University College London. UK.*

**Beyond amyloid: emerging tau therapies in Alzheimer's disease**

11.00 - 11.30



**COFFEE BREAK & POSTERS**



SCIENTIFIC PROGRAM

Personalized Interventions. Secondary prevention

11.30 - 13.00

**SCIENTIFIC SESSION VI: NON-PHARMACOLOGICAL INTERVENTIONS**

Non-pharmacological interventions. Here, we will discuss non-pharmacological interventions and the available evidence of how these address specific pathological components

**CHAIRPERSON:**

**JOAQUIM FERREIRA**

*CNS – Campus Neurológico. University of Lisbon. Portugal.*

**PABLO MARTÍNEZ LAGE**

*Fundación CITA Alzheimer. Donostia. Spain.*

**Successful adaptation of the FINGER model in Southern Europe: From the GOINZ-ZAINDU pilot study to the CITA GO-ON trial**

**GIACOMO KOCH**

*Foundation Santa Lucia, Rome. Italy.*

**Personalized Neuromodulation of the Default Mode Network for Treatment of Alzheimer's Disease: Foundations and Next Steps**

**ARIANNE GRAVESTEIJN**

*Amsterdam UMC, The Netherlands.*

**Beyond Medication: The Role of Exercise and other non-pharmacological interventions in Managing Anxiety and Depression in Neurodegenerative Disorders**

13.00 - 15.00



**LUNCH & POSTERS**

Personalized Interventions. Secondary prevention

15.00 - 16.30

**SCIENTIFIC SESSION VII: DIGITAL THERAPIES IN ASSESSMENT AND INTERVENTIONS**

**CHAIRPERSON:**

**JOHN KRAKAUER**

*Champalimaud Foundation & Johns Hopkins University.*

**DANIELA PIMENTA DA SILVA**

*CNS, Lisboa. Portugal.*

**The role of exercise in prevention and treatment**

**ARKO GHOSH**

*Leiden University. The Netherlands.*

**Interpreting real world behavior captured on the smartphone**

**DINA KATABI**

*Massachusetts Institute of Technology, USA.*

**AI-Enabled Digital Biomarkers for Neurodegenerative Diseases (On-Line)**

16.30 - 18.00



**COFFEE BREAK & POSTERS**

18.00 - 19.30

**LIVE MUSIC & COCKTAIL**

SCIENTIFIC PROGRAM

Patient's perspective

10.00 - 10.20

**ARRIVAL AND SEATING OF ALL ATTENDEES**

10.30 - 13.30

**SESSION: PEOPLE LIVING WITH AD AND PD – THE PATIENT AT THE CENTER OF CARE AND THEIR ENGAGEMENT IN RESEARCH**

**CHAIRPERSON:**

**MARCELO MENDONÇA**

*Champalimaud Foundation, Lisbon. Portugal.*

10.30 - 11.30

**Presentations:**

**JOSEFA DOMINGOS**

*Parkinson's Europe and Young Parkies Portugal*

**MARIA DO ROSÁRIO ZINCKE**

*Alzheimer Europe and Associação Alzheimer Portugal*

**MARILÓ ALMAGRO**

*Confederación Española de Alzheimer y otras demencias (CEAFA). Spain.*

11.30 - 12.00



**COFFEE BREAK & POSTERS**

Patient's perspective

12.00 - 12.30

**OFFICIAL ACT "INTERNATIONAL ALZHEIMER'S DAY"  
BY HER MAJESTY QUEEN SOFÍA OF SPAIN**

12.30 - 13.30

**ROUND TABLE**

Patient associations:

**JOSEFA DOMINGO**

*Parkinson's Europe and Young Parkies Portugal*

**MARIA DO ROSÁRIO ZINCKE**

*Alzheimer Europe and Associação Alzheimer Portugal*

**MARILÓ ALMAGRO**

*Confederación Española de Alzheimer y otras demencias (CEAFA). Spain.*

**KINA GARCÍA**

*Panel de expertos de personas con Alzheimer (PEPA).*

**ALICIA CAMPOS**

*Federación Española Parkinson.*

Neurologists/Researchers:

**ISABEL SANTANA**

*Faculdade de Medicina, Universidade de Coimbra. Portugal.*

**ALBERTO LLEÓ**

*Unidad de Memoria. Hospital de Sant Pau, Barcelona. Spain.*

**PASCUAL SÁNCHEZ-JUAN**

*Fundación CIEN, Madrid. Spain.*

**JOAQUIM FERREIRA**

*CNS – Campus Neurológico. University of Lisbon. Portugal.*

Geneticists:

**AGUSTÍN RUIZ**

*Fundació ACE, Barcelona. Spain.*

13.30

**END OF MEETING**

ORGANIZERS



Fundação  
Champalimaud

GOLD SPONSORS:



SILVER SPONSOR:



